

DEF

# PIUSI

USA



*Fluid Handling Innovations*

## DEF SOLUTIONS CATALOG

Acterra Group, Inc.

800.289.7371 | [www.acterragroup.com](http://www.acterragroup.com)

EN  
1.2018

# COMPANY PROFILE

# **S**INCE 1953



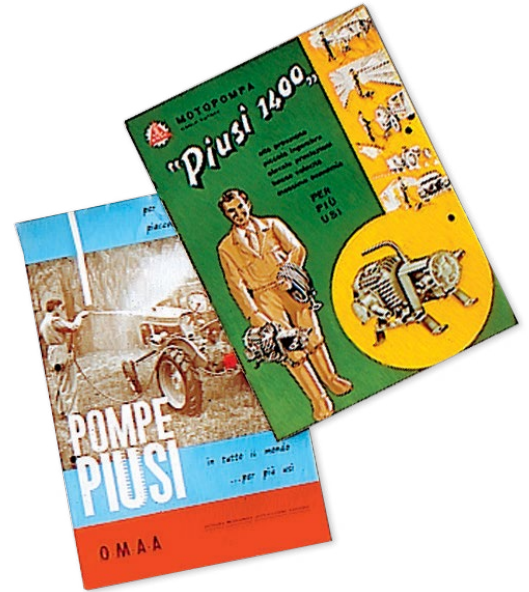
The **Piusi USA team**, located in **Fort Lauderdale, FL**, serves the United States, Canada, and Latin American markets. This **extension of the Piusi SPA family** in the United States devotes time and effort in **fortifying the bond between American consumers and Italian ingenuity**.

Piusi was **established in 1953** in Suzzara, in the province of Mantua (Italy). They started as a mechanical engineering workshop serving the agricultural industry. The company soon made a name for itself as a **manufacturer of strong and easy-to-use products suitable for a range of “many uses” (più-usi)**.

Research is constantly focused on **finding innovative solutions**, the upshot of the genius in Italian excellence. This has led Piusi to set up **modern offices and a manufacturing facility** which includes an automated warehouse on a covered surface area of 270,000 ft<sup>2</sup>, part of a larger area covering 473,000 ft<sup>2</sup>.

Piusi boasts an **efficient and dynamic corporate structure** with **200 employees**, an **in-house research & development laboratory**, and an **extensive sales and spare-parts network**, further strengthened in 2009 with the opening of a company for the North and Central American market based in Florida - USA.

Today, Piusi SPA is a **major player in over 120 different countries**, with a **broad range of intelligent, professional and easy-to-use solutions for transferring and measuring fuels, lubricants, and liquids**.



MADE IN ITALY  
Since 1953

## MINI-BULK DISPENSERS

|                        | Details/Flow Rate        | Page |
|------------------------|--------------------------|------|
| SB MINI-BULK DISPENSER | <b>7-9 GPM</b>           | p. 4 |
| BLUE BOX               | Lockable metal container | p. 4 |

## DEF TRANSFER PUMP KITS

|                                   |                |      |
|-----------------------------------|----------------|------|
| THREE25                           | <b>7-9 GPM</b> | p. 5 |
| SB TOTE KITS (basic, basic+, pro) | <b>7-9 GPM</b> | p. 6 |
| SB DRUM KITS (basic, basic+, pro) | <b>7-9 GPM</b> | p. 7 |

## HAND PUMPS

|                            |              |      |
|----------------------------|--------------|------|
| ROTARY - PISTON - TOTE KIT | <b>4 GPM</b> | p. 8 |
|----------------------------|--------------|------|

## AIR-OPERATED PUMPS

|               |                    |      |
|---------------|--------------------|------|
| MP140 - MP190 | <b>26 / 58 GPM</b> | p. 9 |
|---------------|--------------------|------|

## PORTABLE DISPENSERS

|                                |                |       |
|--------------------------------|----------------|-------|
| PIUSI PORTABLE TANK 50G / 100G | <b>7-9 GPM</b> | p. 10 |
|--------------------------------|----------------|-------|

## DEF TRANSFER PUMP

|            |                |       |
|------------|----------------|-------|
| SUZZARABLU | <b>7-9 GPM</b> | p. 11 |
|------------|----------------|-------|

## HOSE REEL

|                     |                              |       |
|---------------------|------------------------------|-------|
| AUTOMATIC HOSE REEL | <b>25 / 50 ft.</b> EPDM hose | p. 11 |
|---------------------|------------------------------|-------|

## MANAGEMENT SYSTEMS

|                               |  |       |
|-------------------------------|--|-------|
| MC BOX 1.5 / SELF SERVICE 1.5 | Up to <b>60</b> or <b>120 users</b>    | p. 12 |
| SELF SERVICE MC DISPENSER     | <b>7-9 GPM</b> , up to <b>80 users</b> | p. 12 |

## FLOW & PULSE METERS

|                |                               |       |
|----------------|-------------------------------|-------|
| K24 DEF METER  | <b>1.6-26.4 GPM</b>           | p. 13 |
| TURBINOX       | <b>2.6-10.6 GPM</b>           | p. 13 |
| REMOTE DISPLAY | Universal pulse meter display | p. 13 |

## DEF NOZZLES

|                  |                    |       |
|------------------|--------------------|-------|
| SB 325 NOZZLES   | <b>9 GPM</b>       | p. 14 |
| AUTOMATIC NOZZLE | <b>11 GPM</b>      | p. 15 |
| MANUAL NOZZLE    | <b>20 GPM</b>      | p. 15 |
| GRAVITY KIT      | Gravity fed nozzle | p. 15 |

## MONITORING SYSTEM

|                      |                       |       |
|----------------------|-----------------------|-------|
| OCIO LEVEL INDICATOR | Hardware and software | p. 16 |
|----------------------|-----------------------|-------|

## GARAGE EQUIPMENT

|         |                        |       |
|---------|------------------------|-------|
| DELPHIN | DEF dispenser for cars | p. 17 |
|---------|------------------------|-------|

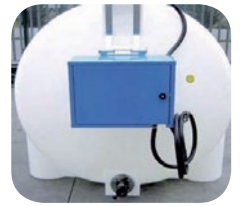
## ACCESSORIES & MORE

|  |      |          |
|--|------|----------|
| REPLACEMENT PARTS - FITTINGS - CONNECTIONS | Etc. | p. 18-19 |
|--|------|----------|



# MINI-BULK

## DEF DISPENSER



### SB MINI-BULK DISPENSER



- Your answer to on and off-site mini-bulk dispensing
- Easily connects to your mini-bulk tank
- Lockable system for added security
- Heavy duty AC DEF pump
- K24 DEF meter
- Automatic stainless steel nozzle
- Various components include: **Blue Box**, **SB Pro Kit** (pg. 6), **Pedestal** (F1270800), and **Mounting Plate** (F20300000)
- Field assembly required

### BLUE BOX



Lockable metal container for the SuzzaraBlue pump with nozzle holder and hose hanging bracket. Able to be mounted directly to polytanks or placed on optional pedestal.

SuzzaraBlue Pro sold separately.

Key included.

| Part #    | Description            | Flow Rate<br>GPM | Power    |      |      | Nozzle<br>type | Meter     | Filter | Weight<br>lb. | Packaging<br>in. |              |
|-----------|------------------------|------------------|----------|------|------|----------------|-----------|--------|---------------|------------------|--------------|
|           |                        |                  | volts/hz | RPM  | watt |                |           |        |               |                  | amp          |
| DEFmini   | SB Mini-Bulk Dispenser | 7-9              | 120/60   | 1400 | 400  | 2              | Automatic | K24    | -             | 85               | Multiple     |
| R1611800A | Blue Box               | -                | -        | -    | -    | -              | -         | -      | -             | 33               | 24 x 23 x 13 |

# THREE25

Discover a **new dimension of fluid handling** with the Piusi Three25. Created to **ensure optimum durability and efficiency**, the Piusi Three25 administers a 32.5% urea solution that is protected by our DEF 3D filter which **prevents the contamination of your DEF** and in turn allows for an **increased life of the catalyst**.

## 9 GPM

## PREMIUM DEF TRANSFER PUMP

**TURN KEY  
SYSTEM**



- 1** DEF 3D Filter  
Part # F00611D10
- 2** Sturdy, stainless steel, plate with roll bar protection.
- 3** New Piusi DEF Coupler (PDC) for common IBC tank steel coupling systems
- 4** New security lock bracket system
- 5** High Capacity Hose Holder and Practical Nozzle Holder
- 6** Crimped EPDM delivery hose  
  
SB325-meter automatic nozzle with break-away system and stainless steel spout
- 7**



**100%  
MADE IN  
ITALY**

**6.5 MINUTE  
TIMER  
(120V Only)**

I T A L I A N

D E S I G N

| Part #    | Description  | Flow Rate |          | Power |      | Nozzle    | Delivery Hose<br>ft. | cRUus<br>Certification | Weight<br>lb. | Packaging<br>in. |
|-----------|--------------|-----------|----------|-------|------|-----------|----------------------|------------------------|---------------|------------------|
|           |              | GPM       | volts/hz | RPM   | watt |           |                      |                        |               |                  |
| F00101A0A | Three25 120V | 9         | 120/60   | 1700  | 370  | Automatic | 20                   |                        | 33            | 20 x 16 x 13     |
| F00101A1A | Three25 12V  | 9         | 12V      | 2800  | 260  | Automatic | 20                   | -                      | 28            | 20 x 16 x 13     |

# SUZZARABLUETOTE

## KITS INCLUDE

- Heavy-duty DEF pump
- Stainless steel base
- Nozzle holder
- 20 ft. delivery hose
- 4 ft. suction hose
- Hose tail and clamps



1

### PIUSI DEF COUPLER (PDC)

The new **PDC connector** allows for **quick and safe** connection to **totes & drums** equipped with a **stainless steel container valve**.



IBC Cover w/ 2" Buttress  
Part # F20226000

PDC Coupler  
Part # F1891000A

2

### MICRO MATIC

#### RSV CLOSED SYSTEM

**RSV Stainless Steel Dispense Coupler**  
by Micro Matic  
Part # F1536000

**RSV Container Valve**  
Part # F17137000  
**RSV Down Tube**  
for 330 gal  
Part # F18229000 (49")



**Composite Dispense Coupler**  
by Micro Matic  
Part # F20436000



**6" Single Bung IBC Cover**  
by Micro Matic  
Part # F20226000



**6" Dual Bung IBC Cover**  
by Micro Matic  
Part # F20437000



3

### BOTTOM CONNECTION KIT

Part # F15515020



| Part #   | Description             | Flow Rate |          | Power |      | Meter | Nozzle    | Delivery Hose | cRUus Certification | Weight | Packaging Box |
|----------|-------------------------|-----------|----------|-------|------|-------|-----------|---------------|---------------------|--------|---------------|
|          |                         | GPM       | volts/hz | RPM   | watt |       |           |               |                     |        |               |
| F00201A1 | SUZZARABLU 120V PRO     | 9         | 120/60   | 1400  | 400  | Yes   | Automatic | 20            |                     | 35     | 19 x 15 x 11  |
| F00201A2 | SUZZARABLU 120V BASIC   | 9         | 120/60   | 1400  | 400  | No    | Manual    | 20            |                     | 28     | 19 x 15 x 11  |
| F00201A5 | SUZZARABLU 120V BASIC + | 9         | 120/60   | 1400  | 400  | No    | Automatic | 20            |                     | 32     | 19 x 15 x 11  |
| F00201A8 | SUZZARABLU 12V PRO      | 9         | 12       | 2800  | 260  | Yes   | Automatic | 20            | -                   | 28     | 19 x 15 x 11  |
| F00201A9 | SUZZARABLU 12V BASIC    | 9         | 12       | 2800  | 260  | No    | Manual    | 20            | -                   | 22     | 19 x 15 x 11  |

# SUZZARABLUEDRUM

## SUZZARABLUEDRUM

The SuzzaraBlue Drum dispensing kits **allow you to quickly switch out empty DEF drums on the fly.** The system comes equipped with an **easily transferable base**, manual or automatic nozzle, nozzle holder, **heavy-duty pump**, **20 ft. of delivery hose**, and **1.5 ft. of suction hose.** The heavy-duty pump is capable of delivering 7-9 GPM and is available in 12V or 120V (cRUus) option.

### BASIC DRUM KIT

- **Stainless steel base** with nozzle holder
- **Heavy-duty pump**
- **Manual nozzle**
- **20 ft. delivery hose**
- **1.5 ft. suction hose**
- **6.5 minute** automatic shutoff

### BASIC+ DRUM KIT

- **Stainless steel base** with nozzle holder
- **Heavy-duty pump**
- **Automatic stainless steel nozzle**
- **20 ft. delivery hose**
- **1.5 ft. suction hose**
- **6.5 minute** automatic shutoff

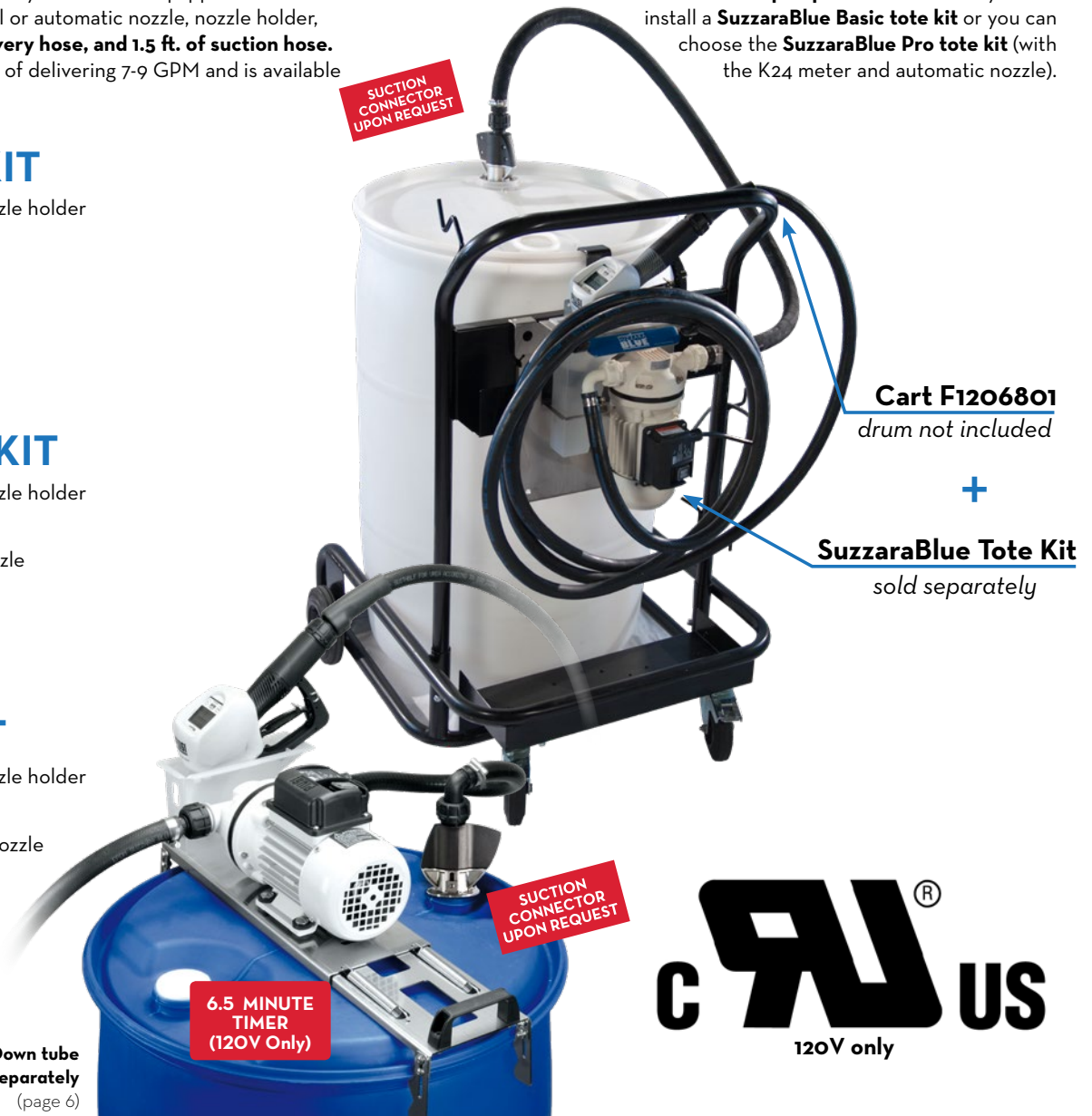
### PRO DRUM KIT

- **Stainless steel base** with nozzle holder
- **Heavy-duty pump**
- **SB 325 metered automatic nozzle**
- **20 ft. delivery hose**
- **1.5 ft. suction hose**
- **6.5 minute** automatic shutoff (120V Only)

\*RSV Down tube sold separately (page 6)

## SUZZARABLUEDRUM

The cart is **designed for easy mobility of the drum and tote pump kit.** With the cart you can install a **SuzzaraBlue Basic tote kit** or you can choose the **SuzzaraBlue Pro tote kit** (with the K24 meter and automatic nozzle).



| Part #   | Description                       | Flow Rate |          | Power |      | Nozzle    | Delivery Hose | cRUus Certification | Weight | Packaging    |
|----------|-----------------------------------|-----------|----------|-------|------|-----------|---------------|---------------------|--------|--------------|
|          |                                   | GPM       | volts/hz | RPM   | watt |           |               |                     |        |              |
| F00201A3 | SUZZARABLUEDRUM BASIC drum kit    | 7-9       | 120/60   | 1700  | 370  | Manual    | 20            |                     | 27     | 19 x 15 x 11 |
| F00201A4 | SUZZARABLUEDRUM BASIC+ drum kit   | 7-9       | 120/60   | 1700  | 370  | Automatic | 20            |                     | 31     | 19 x 15 x 11 |
| F00201AL | SUZZARABLUEDRUM PRO drum kit 120V | 7-9       | 120/60   | 1700  | 370  | Automatic | 20            |                     | 21     | 19 x 15 x 11 |
| F00201AM | SUZZARABLUEDRUM PRO drum kit 12V  | 7-9       | 12       | 2800  | 260  | Automatic | 20            | -                   | 24     | 19 x 15 x 11 |
| F1206801 | Cart (only)                       |           |          |       |      |           |               | -                   | 59     | 43 x 27 x 13 |

# PIUSI HAND PUMP

The new **Piusi DEF Rotary Hand Pump** is the first hand pump to be **specifically designed for use with DEF!**

## KIT INCLUDES

- 9 ft. of dispensing hose
- Stainless steel spout
- Flexible suction pipe
- Drum connector
- Filter available

- Maintenance free for 250,000 gallons
- Self-Priming
- Integrated check valve for immediate dispensing
- Eliminate the siphon effect with check valve and spring-loaded vanes
- Prevents DEF crystallization



Upgrade to a closed loop system with the PDC and PDC Adapter

PDC Part # **F1891000A**      PDC adapter Part # **F20195000**

\*both parts required to complete closed loop system



| Part #           | Description                       | Flow Rate | Spout | Suction Pipe | Drum Connector | Delivery Hose | Weight | Packaging     |
|------------------|-----------------------------------|-----------|-------|--------------|----------------|---------------|--------|---------------|
|                  |                                   | GPM       | Ø     |              |                | ft.           | lb.    | in.           |
| <b>FO0332A30</b> | Rotary Hand Pump Kit              | 4         | 3/4"  | included     | included       | 9.8           | 7      | 14 x 10 x 7   |
| <b>FO0332A80</b> | Rotary Hand Pump Kit w/ 3D Filter | 4         | 3/4"  | included     | included       | 9.8           | 8      | 14 x 10 x 7   |
| <b>FO0611D00</b> | 3D Filter Kit w/ Housing          | -         | -     | -            | -              | -             | 2      | 6 x 4 x 7     |
| <b>FO0611D10</b> | Piusi 3D Filter Cartridge         | -         | -     | -            | -              | -             | 1      | 6 x 4 x 7     |
| <b>FO033213A</b> | Piston Hand Pump Kit              | 4         | 3/4"  | included     | included       | 9.8           | 7      | 20 x 10 x 7   |
| <b>FO0332B00</b> | Rotary Hand Pump Tote Kit         | 4         | 3/4"  | Included     | included       | 9.8           | 8      | 11.5 x 12 x 7 |



# PIUSIMP

## AIR OPERATED DIAPHRAGM PUMP

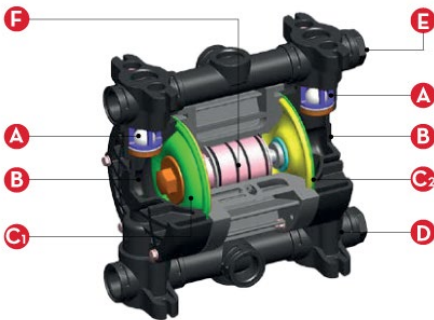
58 GPM | 26 GPM



MP190



MP140



- A = Ball valves
- B = Pumping chamber
- C1 = Product-side diaphragm
- C2 = Air-side diaphragm
- D = Suction manifold
- E = Delivery manifold
- F = Pneumatic exchangers (IAMA)

### FEATURES

- Self-priming
- Sturdy **technopolymer** body
- **ATEX certification** for severe duty conditions or operation in potentially explosive atmospheres
- **Can be run dry** without causing damage
- **Fine tuning of flow rate** without pressure loss

| Part #    | Description | Pump Body     | NPT        | Air Connection | Flow Rate<br>GPM | Weight<br>lb. | Packaging<br>in. |
|-----------|-------------|---------------|------------|----------------|------------------|---------------|------------------|
|           |             |               | In/Out     |                |                  |               |                  |
| Foo208P50 | MP140       | polypropylene | 1" NPT     | 3/8"           | 26 @ 100 psi     | 13            | 16 x 15 x 12     |
| Foo208P60 | MP190       | polypropylene | 1-1/4" NPT | 1/2"           | 58 @ 100 psi     | 29            | 19 x 19 x 12     |

# PIUSI PORTABLE TANK



- 1 SuzzaraBlue 12V DC Pump
- 2 2" filling plug with integrated vent
- 3 Lockable lid
- 4 13 ft. outflow hose
- 5 SB 325 Automatic Nozzle
- 6 Nozzle Holder
- 7 13 ft. cable with clamps
- 8 Mechanical level gauge (100g only)

#### AVAILABLE ACCESSORIES

#### UPGRADE TO A METERED NOZZLE



**SB 325 Metered**  
Part # F00617010



For universal and durable **DEF transportation and storage**, the Piusi Portable Tank (PPT) offers an effective solution to **deliver DEF to on-road and off-road vehicles**. The PPT ensures a safe and **quick DEF transfer** utilizing its SuzzaraBlue DC pump, shock resistant polyethylene construction, ventilation cap, and stainless steel accessories. The **lightweight, lockable tanks, are UV resistant** and **can be effortlessly loaded onto your delivery vehicle**. Most importantly, the SuzzaraBlue is now secured and easily accessible.

#### FEATURES

- **Lightweight tank with forklift/pallet-jack base** for easy movement and loading of tank when full or empty
- Shock resistant **polyethylene construction** for DEF compatibility
- **Fully enclosed, lockable system** for added security
- **UV resistant** to protect from weathering
- **13 ft. cable with clamps**
- **13 ft. delivery hose**
- On/Off Switch

PIUSI PORTABLE TANK 100G



PIUSI PORTABLE TANK 50G



\*Heated option available upon request

| Part #    | Description              | Flow Rate |          | Power |      |     | Cables | Connections    |                | Weight | Dimensions    |
|-----------|--------------------------|-----------|----------|-------|------|-----|--------|----------------|----------------|--------|---------------|
|           |                          | GPM       | volts/hz | RPM   | watt | amp |        | in             | out            |        |               |
| F00102000 | Piusi Portable Tank 50g  | 7-9       | 12V DC   | 2800  | 260  | 22  | 13 ft. | hose tail 3/4" | hose tail 3/4" | 53     | 3 x 2 x 2     |
| F00102010 | Piusi Portable Tank 100g | 7-9       | 12V DC   | 2800  | 260  | 22  | 13 ft. | hose tail 3/4" | hose tail 3/4" | 114    | 4 x 2.6 x 2.5 |

# SUZZARABLU PUMPS

REGISTERED DESIGN

Piusi has developed a new type of membrane pump equipped with an **electric motor**, **6.5 minute auto-shutoff timer** and **no need for a dynamic seal**. This allowed us to obtain a **reliable industrial pump** with **self-priming capabilities**.

## ACPUMPS

| FLOW RATE       | MAX OPERATING PRESSURE | DUTY CYCLE                    |
|-----------------|------------------------|-------------------------------|
| <b>9</b><br>GPM | <b>23</b><br>PSI       | <b>20</b><br>MINUTES ON & OFF |

### FEATURES

- Voltage: **120V / 60Hz**
- Absence of dynamic seals
- **ON/OFF** switch
- **6 ft. cable with socket**
- **6.5 minute timer board**



AC



DC

handle available  
Part # **R16175010**

## DCPUMPS

| FLOW RATE       | MAX OPERATING PRESSURE | DUTY CYCLE                    |
|-----------------|------------------------|-------------------------------|
| <b>9</b><br>GPM | <b>23</b><br>PSI       | <b>20</b><br>MINUTES ON & OFF |

### FEATURES

- Voltage: **12V / 24V**
- Absence of dynamic seals
- **ON/OFF** switch
- **6 ft. cable with clamps**
- Handle available upon request
- **Optional 18 ft. cable with clamps**

| Part #           | Description  | Flow Rate |          | Power |      |     | Cables | Connections    |                | Weight | Packaging   |
|------------------|--|-----------|----------|-------|------|-----|--------|----------------|----------------|--------|-------------|
|                  |  | GPM       | volts/hz | RPM   | watt | amp |        | in             | out            |        |             |
| <b>F00203100</b> | SUZZARABLU AC pump 120V                              | 7-9       | 120/60   | 1400  | 400  | 4.7 | Yes    | hose tail 3/4" | hose tail 3/4" | 15     | 14 x 12 x 8 |
| <b>F00204080</b> | SUZZARABLU DC pump 12V                               | 7-9       | 12       | 2800  | 260  | 22  | Yes    | hose tail 3/4" | hose tail 3/4" | 10     | 14 x 11 x 8 |
| <b>F00204090</b> | SUZZARABLU DC pump 24V                               | 7-9       | 24       | 2800  | 310  | 13  | Yes    | hose tail 3/4" | hose tail 3/4" | 9      | 14 x 11 x 8 |
| <b>F0020402</b>  | SUZZARABLU DC pump 12V with 18 ft. cable with clamps | 7-9       | 12       | 2800  | 260  | 22  | Yes    | hose tail 3/4" | hose tail 3/4" | 10     | 14 x 11 x 8 |

# HOSE REEL

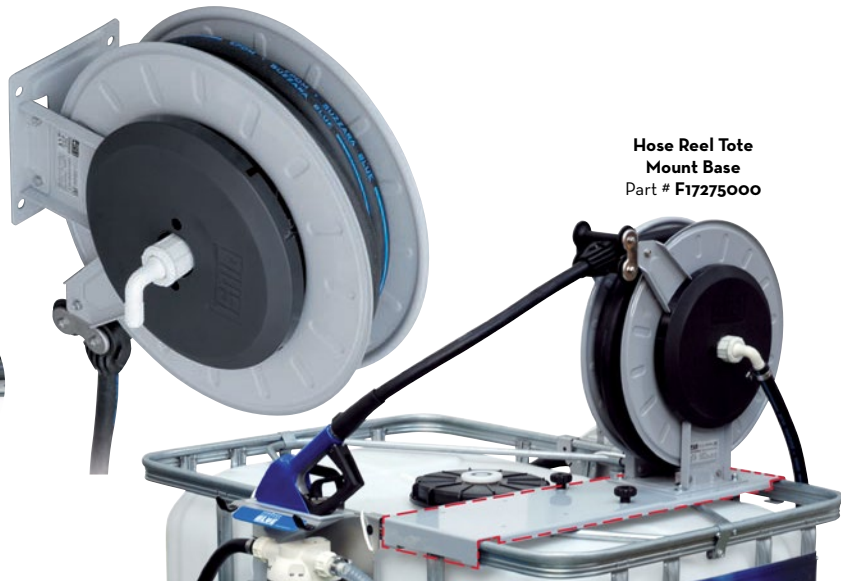
Hose reel **made specifically for DEF use** with supply hoses. **Designed to limit pressure loss** and facilitate use. The hose reel reduces pressure loss through the proper sizing of the hydraulic system, includes a protective latch mechanism that prevents accidental contact with the hands. This hose reel offers **adjustable arms for easy positioning** as required, and an **optional rotating wall support** that facilitates hose reel installation in different positions.

### FEATURES

- Protective latch
- **Adjustable positioning arm**
- **Optional wall support plate**



Rotating Support Plate  
25 ft. Part # **F17317000**  
or  
50 ft. Part # **F1627900**



Hose Reel Tote Mount Base  
Part # **F17275000**

| Part #           | Description                    | Hose  |     | Max Pressure | Inlet with Swivel | Outlet Hose tail | Weight | Packaging    |
|------------------|--------------------------------|-------|-----|--------------|-------------------|------------------|--------|--------------|
|                  |                                | incl. | ft. |              |                   |                  |        |              |
| <b>F0075007</b>  | Hose reel DEF 25 ft. EPDM hose | Yes   | 25  | 145          | 3/4"              | 3/4"             | 38     | 22 x 21 x 11 |
| <b>F0075011</b>  | Hose reel DEF 50 ft. EPDM hose | Yes   | 50  | 145          | 3/4"              | 3/4"             | 53     | 22 x 21 x 11 |
| <b>F17275000</b> | Hose reel tote base mount      | -     | -   | -            | -                 | -                | 17     | 23 x 10 x 2  |

# MANAGEMENT SYSTEMS

## MCBOX1.5



### FEATURES:

- ETL/cETL Certified for operation in potentially hazardous environments
- Control up to **60 or 120 users**; record up to **650 transactions**
- Set up, monitoring, and reporting **done from your PC**
- **Sliding front cover** protects the display from wind and rain
- **Intuitive dashboard for fleet management**
- **Lockable front panel** for added security
- **Self Service 1.5 software required**
- Not compatible with MAC computers

| Part #   | Description      | AC/DC<br>volts/hz | Weight<br>lb. | Packaging<br>in. |
|----------|------------------|-------------------|---------------|------------------|
| F0059750 | MC Box 1.5 - ETL | 120/60            | 12            | 14 x 7.5 x 11.25 |

\*MC Box and pump are powered by single circuit

## SELF SERVICE MC 1.0 & 2.0

- Controls up to **80 users** through **PIN codes** or **i-button keys**
- **Hinged front panel** provides easy access to the internal components of the dispenser (pump, filter, meter, control panel)
- **Lockable system** for added security
- **Calculates consumption** of each individual user
- **SB 325 nozzle, 3D filter, and K24 meter**
- **Dedicated software** for printing individual **detailed summaries**
- **Key reader** with USB socket for **exporting data**
- **IP55 protection**
- **Self Service software** required (please visit [www.piusiusa.com](http://www.piusiusa.com) for more information on the Self Service software)



### INCLUDED



K24 DEF Pulse Meter



3D DEF Filter

| Part #    | Description                       | Flow Rate |          | Power |      |     | Nozzle type | Meter | Filter    | Weight lb. | Packaging in. |
|-----------|-----------------------------------|-----------|----------|-------|------|-----|-------------|-------|-----------|------------|---------------|
|           |                                   | GPM       | volts/hz | RPM   | watt | amp |             |       |           |            |               |
| F00744020 | Self Service MC DEF Dispenser     | 7-9       | 120/60   | 1400  | 400  | 2   | SB 325      | K24   | 3D Filter | 110        | 19 x 16 x 58  |
| F00743080 | Self Service MC DEF Dispenser 2.0 | 7-9       | 120/60   | 1400  | 400  | 2   | SB 325      | K24   | 3D Filter | 110        | 19 x 16 x 58  |

## SELF SERVICE 1.5 OPERATING SOFTWARE PACKAGES



| Part #    | Description                   | Control up to | Users |
|-----------|-------------------------------|---------------|-------|
| F00772400 | Self Service 1.5 Standard     | 2 MC Boxes    | 60    |
| F00772420 | Self Service 1.5 Professional | 4 MC Boxes    | 120   |
| F12262010 | Key Reader                    | -             | -     |
| F20552000 | Gray Manager Key 1.5          | -             | -     |
| F15904000 | Yellow User Key (x10)         | -             | -     |



# FLOW & PULSE METERS

## K24

The K24 meter is **easy to install in-line on the delivery hose or at the nozzle**. The K24 meter contains a compact and **highly visible display**. The display **can be rotated in 4 different positions**.

**Impulse type signals:** Single channel, reed switch. Electronic card with LCD display: 5 digit partial total from 0.1 to 99999, 6 digit non-resettable total from 1 to 999999.

- **Resettable** total included
- **Programmable** unit of measurement
- **Flow rate** indication
- Powered by **2 AAA** batteries

ACCURACY  
**1%**  
+/-

PULSE OUT  
**333**  
PPG



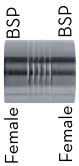
K24 pulser



K24 flow meter

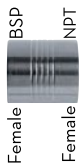
**INCLUDED:**

Socket 1" BSP/BSP



**AVAILABLE:**

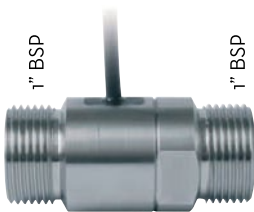
Socket 1" BSP/NPT



Part #  
**F16458000**  
(pack 20 pcs.)

## TURBINOX

This meter is **easy to install**. A tight **stainless steel body** provides endurance for use in every condition. Also available is our **pulser display** which **allows you to connect an external receiver**.



In-line turbine pulse meter

ACCURACY  
**1%**  
+/-

PULSE OUT  
**333**  
PPG

## REMOTE DISPLAY with PULSE OUT

**Universal display** for controlling pulse meters via 49 ft. cable. **Screen displays quantity delivered and non-resettable total**. Available as both **basic display device** and as **pulse emitter** for use with management systems.



| Part #           | Description                   | Flow Rate<br>GPM | Max<br>Operating<br>Pressure<br>psi | Display | Pulse Out (ppg)   |                    | Weight<br>lb. | Packaging<br>in. |
|------------------|-------------------------------|------------------|-------------------------------------|---------|-------------------|--------------------|---------------|------------------|
|                  |                               |                  |                                     |         | Pulser<br>Version | Display<br>Version |               |                  |
| <b>Foo407340</b> | K24 Flow Meter (1 socket) GAL | 1.6 - 26.4       | 145                                 | Yes     | -                 | 333                | 1             | 7 x 5.5 x 3.5    |
| <b>Foo40721B</b> | K24 Pulser-Meter (1 socket)   | 1.6 - 26.4       | 145                                 | No      | 333               | -                  | 1             | 7 x 5.5 x 3.5    |
| <b>Foo42000A</b> | In-line Turbine Pulse Meter   | 2.6 - 10.6       | 290                                 | No      | 333               | -                  | 1             | 6 x 5 x 3        |
| <b>Foo49503B</b> | Remote Display with Pulse Out | -                | -                                   | Yes     | -                 | 1-10-100           | 2.6           | 9 x 6 x 5        |

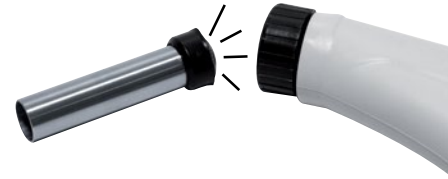
# DEF NOZZLES

A complete range of **automatic nozzles designed for the DEF market**. This new automatic nozzle is **reliable, lighter, and ergonomic**, setting the standard for all DEF nozzles.

## 9 GPM | 1% ACCURACY

### Break-Away System

In the event that a vehicle accidentally drives away with the nozzle still in the tank, the **spout is designed to detach from the nozzle**. This system allows for a quick repair by merely fitting a new spout onto the nozzle.



### Mis-filling Spout Kit

This kit allows you to **transform a standard SB 325 nozzle into an SB 325 mis-filling system** by simply fitting a different spout onto the nozzle. This feature prevents you from having a mis-fill into the DEF tank.



**SB 325 Automatic**

**SB 325 Metered**

Automatic nozzle with built-in meter

**SB 325 Mis-filling**

Automatic nozzle with built-in meter & mis-fill spout

| Part #    | Description                               | Magnetic Adapter | Flow Rate<br>GPM | Meter | Max Operating Pressure |     | Inlet<br>BSP | Spout<br>ext. Ø | Weight<br>lb. | Packaging<br>in. |
|-----------|---|------------------|------------------|-------|------------------------|-----|--------------|-----------------|---------------|------------------|
|           |   |                  |                  |       | psi                    | bar |              |                 |               |                  |
| F00617000 | SB 325 Automatic Nozzle                   | No               | 9                | No    | 50.8                   | 3.5 | 3/4"         | 3/4"            | 2             | 18 x 8 x 3       |
| F00617010 | SB 325 Metered Automatic Nozzle           | No               | 9                | Yes   | 50.8                   | 3.5 | 3/4"         | 3/4"            | 3             | 18 x 8 x 3       |
| F19174000 | Mis-filling Spout Kit with Bypass Adapter | Yes              |                  |       |                        |     |              |                 | 1             | 6 x 5 x 2        |
| F1840000  | Magnetic Spout Bypass Adapter             |                  |                  |       |                        |     |              |                 | 1             | 6 x 5 x 2        |
| R19173000 | SB 325 Replacement Spout                  |                  |                  |       |                        |     |              |                 | 1             | 6 x 5 x 2        |

## AUTOMATIC NOZZLE

Automatic DEF nozzle featuring a device that stops the flow when the tank is full.



Spout outer diameter  $\varnothing$  3/4"

| FLOW RATE        | MAX OPERATING PRESSURE | WEIGHT           |
|------------------|------------------------|------------------|
| <b>11</b><br>GPM | <b>50</b><br>PSI       | <b>5.7</b><br>LB |

| Part #           | Description                                      |
|------------------|--|
| <b>F0061903B</b> | Auto-nozzle Hose Tail 3/4" with swivel           |
| <b>F0061902B</b> | Auto-nozzle without swivel inlet thread 3/4" BSP |

## MANUAL NOZZLE

Manual DEF nozzle distinguished by high efficiency, due to the low flow resistance, and inexpensive operation.



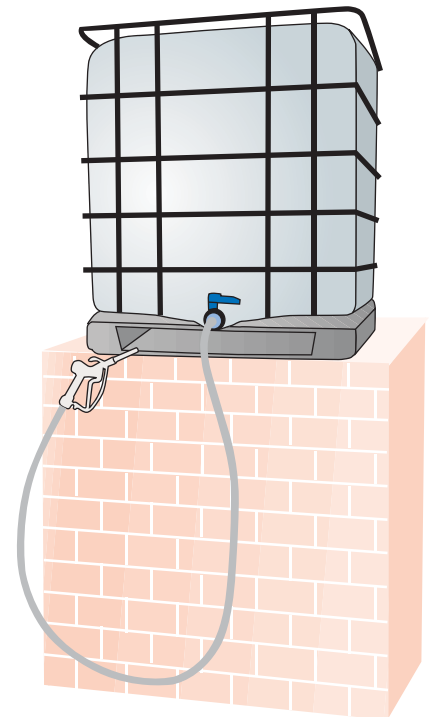
Spout outer diameter  $\varnothing$  3/4"

| FLOW RATE        | MAX OPERATING PRESSURE | WEIGHT         |
|------------------|------------------------|----------------|
| <b>20</b><br>GPM | <b>50</b><br>PSI       | <b>1</b><br>LB |

| Part #           | Description       |
|------------------|-------------------|
| <b>F14761000</b> | Manual DEF nozzle |

## GRAVITYKIT

As an alternative to the electric pump and hand pump options, the **Gravity Kit offers another method of dispensing DEF**. Equipped with a manual DEF nozzle and 2" NPT connector; this is an economic means of utilizing your IBC tote to **dispense from an elevated position**.



### Technical Features

- Manual nozzle
- 9 ft. of hose
- IBC bottom adapter
- 1" inner hose diameter  $\varnothing$

| Part #           | Description | Packaging     |
|------------------|-------------|---------------|
| <b>F15517010</b> | Gravity Kit | 16 x 11.5 x 8 |

# OCIO

## LEVEL INDICATOR

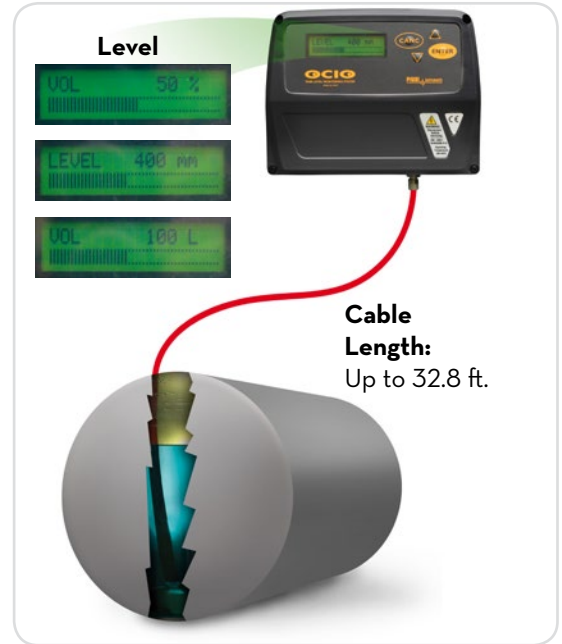
**Continuous tank level monitoring**, the OCIO detects the static pressure generated by the **fluid height** by means of a tube inserted into the tank and **displays the fluid level or volume**. **Integrated software available** that allows the user to **set various parameters** and monitor the **usage of up to 12 tanks** at a time.

### HARDWARE

- **Instant digital level indicator**
- **Customizable** unit of measurement (**L/mm, G/in**)
- Maximum measurable height: **13 ft.**
- Maximum measurable length: **165 ft.**
- **Calibrate** as required

### SOFTWARE

- **Easy tank level monitoring**
- Intuitive **tank display**
- **Adjustable** low/high **alarm levels**
- Resettable **tank type** and dimensions for different tanks
- **OCIO level indicator hardware required for each individual tank**

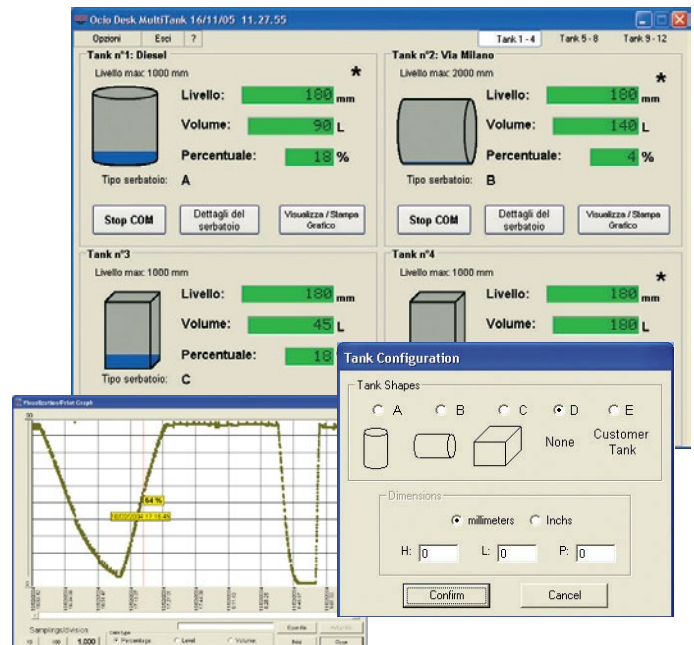


| Part #           | Description                              | AC volts/hz | RS exit   | Weight lb. | Packaging in. |
|------------------|--|-------------|-----------|------------|---------------|
| <b>FO0755150</b> | Level Indicator OCIO LV / RS output 120V | 120/60      | available | 4.8        | 12 x 16 x 4   |

### OCIO DESK

Software + PC interface

| Part #           | Description   | Weight lb. | Packaging in. |
|------------------|---|------------|---------------|
| <b>FO0755S1A</b> | OCIO desk SINGLE TANK (software + PC interface for 1 tank)    | 1          | 8 x 5 x 5.5   |
| <b>FO0755SoC</b> | OCIO desk MULTITANK 4 (software + PC interface for 4 tanks)   | 2.8        | 8 x 5 x 5.5   |
| <b>FO0755S2A</b> | OCIO desk MULTITANK 8 (software + PC interface for 8 tanks)   | 5.2        | 7 x 7 x 6.5   |
| <b>FO0755S3A</b> | OCIO desk MULTITANK 12 (software + PC interface for 12 tanks) | 6.8        | 7 x 8 x 6.5   |





# DELPHIN

## DEF CAR DISPENSER

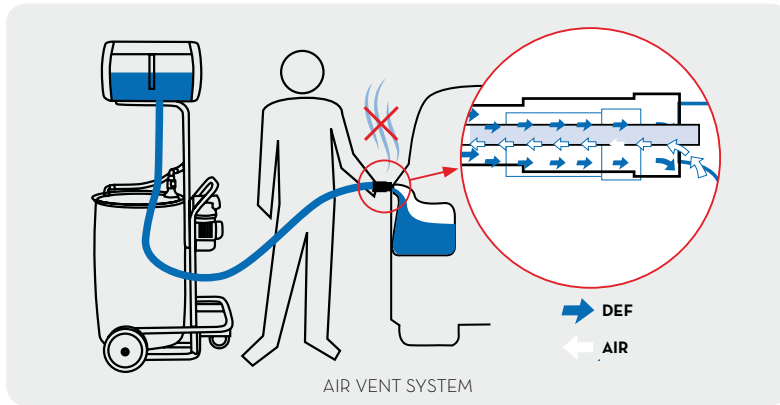
Piusi, the **market leader in solutions for DEF refilling**, is proud to present the new **SuzzaraBlue Delphin**.

The new system is **specially designed** for use in **motor vehicle workshops**. Mounted on a sturdy cart for **ease of transport**, it allows vehicle tanks to be **refilled with DEF in complete safety**.

The **120 volt membrane pump** fills the Delphin's upper tank with DEF, which is then transferred to the vehicle's tank by gravity. This **innovative system avoids leaks and drips**. It is versatile, **easy to move** and **user friendly**. Choose the reliability of Piusi solutions for all your refilling needs!

**CLOSED SYSTEM**

**PATENT PENDING**



### COMPONENTS



1. Sturdy cart for ease of transport
2. 120V electric pump
3. Delphin tank (5 gallon capacity)
4. Visual level indicator
5. Delivery hose and fitting connection to the vehicle's tank

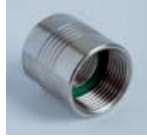
### TECHNICAL DATA

| Part #    | Description | Flow Rate |          | Power |      | On/Off Switch | Delivery Hose | Ø    | Packaging    |
|-----------|-------------|-----------|----------|-------|------|---------------|---------------|------|--------------|
|           |             | GPM       | volts/hz | amp   | watt |               |               |      |              |
| FO0100A00 | Delphin     | 1.6       | 120/60   | 1.95  | 400  | Yes           | 20            | 3/4" | 30 x 42 x 32 |

# ADAPTERS



Part #  
**F16074000**  
NPT/NPT  
(pack 20 pcs.)



Part #  
**F16458000**  
BSP/NPT  
(pack 20 pcs.)



Part #  
**F16073000**  
BSP/BSP  
(pack 20 pcs.)



Stainless Steel K24  
Nozzle Adapter  
for automatic nozzle  
M 3/4" BSP - F 1" BSP  
Part # **F16475000**



Plastic K24 Nozzle  
Adapter for  
manual nozzle  
M 1" BSP - F 1" BSP  
Part # **F15776000**



PDC Adapter for  
Rotary Hand Pump  
Part # **F20195000**

# SB325 REPLACEMENT PARTS

## MAGNETIC ADAPTER

Magnetic  
spout tank  
adapter  
Part # **F15165000**



## REPLACEMENT SPOUT

SB 325  
Mis-filling  
replacement spout  
Part # **R19172000**



## REPLACEMENT SPOUT

SB 325  
Non Mis-filling  
replacement spout  
Part # **R19173000**



## BYPASS ADAPTER

SB 325  
Mis-filling spout  
with bypass adapter  
Part # **F19174000**



## BYPASS ADAPTER

SB 325  
Bypass adapter  
Part # **F1840000**



# PLASTIC FITTINGS

## Hose Tail



M 1" BSP x  
Ø 3/4"

Part #  
**F15522000**



90° Ø 3/4"  
M 1" BSP

Part #  
**F15485000**



90° Ø 3/4"  
F 1" BSP

Part #  
**F15484000**

## Swivel



M/F 1" BSP

Part #  
**F15179000**

## Socket 90°



1" F BSP

Part #  
**F16433000**

## Linear Socket



1" F BSP

Part #  
**F16434000**

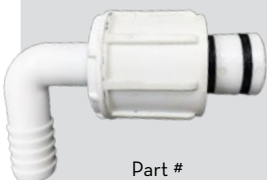
## Hose Tail



1" F BSP

Part #  
**F16435000**

## External DEF Hose Reel Fitting



Part #  
**R18188000**

## Internal DEF Hose Reel Fitting



Part #  
**R1819400A**  
(for hose reel F0075007B, F0075011B)  
Part #  
**R18194000**

(for hose reel F00750070, F0075007A, F00750110, F0075011A)

# ACCESSORIES / REPLACEMENT HOSE / ETC

## HOSE FITTINGS

Stainless Steel  
Swivel Hose Tail  
3/4" BSP  
3/4" Hose Tail  
Part # **F14132000**



## THREE25 HOSE

20 ft. delivery hose  
BPRO crimped  
Part # **F1907200A**



## 20 ft. HOSE

3/4" 20 ft. delivery  
hose EPDM  
Part # **F14125010**



## DELIVERY HOSE

3/4" coil 262 ft.  
EPDM  
Part # **F14125050**



## SUCTION HOSE

3/4" coil 130 ft.  
EPDM  
Part # **F14124000**



## POWER SWITCH

SuzzaraBlue  
Replacement Power  
Switch  
Part # **R16657000**



## CLAMP

Stainless Steel  
23-35-12  
(10 pcs.)  
Part # **F13800000**



## PROTECTOR

Rubber Protector  
Part # **F16497000**



## 3D DEF FILTER

Replacement filter  
cartridge w/ housing  
Part # **F00611D00**



## 3D DEF FILTER

Replacement filter  
cartridge only  
Part # **F00611D10**



 **PEI**<sup>TM</sup> *It's all about the equipment.*



**PIUSI USA, Inc**  
3901 Anglers Avenue  
Fort Lauderdale, FL 33312  
Telephone: (954) 584-1552  
[www.piusiusa.com](http://www.piusiusa.com)

Certified - ISO 9001 - ISO 14001

The company reserves the right to modify the information contained in this catalog without any prior notice.