



FUEL MANAGEMENT



# TIP/GCA terminal

CLOUD NATIVE



## Technical specs

- Cloud/server communication:  
Ethernet, Wi-Fi, cellular, or USB stick
- Interface with dispensers (1 to 16):  
2-channel pulse input, in-use signal  
digital input, auth. 50Amp-relay output
- Interface with tank gauges:  
RS-232 or RS-485 (optional)
- Backlit 2x20 LCD display
- Alphanum. 42-key keyboard
- Vandal-resistant 12-key keypad (opt.)
- Operating temperature:  
-4°F to +131°F (-20°C to +55°C)
- Power supply: 120-240Vac 50-60Hz 1.5A  
DC version: 12-15 Vdc 1A

## Dimensions

- Wallbox:  
HxWxD: 15 3/4" x 15 3/4" x 6 3/16"  
HxWxD: 400x400x157mm
- Wallbox + pedestal:  
HxWxD: 63" x 15 3/4" x 6 3/16"  
HxWxD: 1600x400x157mm

## Communication options

	On-prem. software	SaaS software
USB flash drive	•	•
Ethernet (Cat 5)	•	•
Wi-Fi	•	•
Cellular		•

### Main features

- Cloud-native device for SaaS deployment; Also on-premises capable
- Real-time communication over cellular, Ethernet, or Wi-Fi; with offline capability
- High memory capacity: up to 50k vehicles, 50k drivers, and 2500 transactions offline
- 1 to 16 hoses with simultaneous fueling
- Identification of driver and/or vehicle: code, RFID fob or card, magstripe cards, existing RFID cards, smartphone, etc.
- Compatible with both GIR W150 and GIR W250 software apps

### Enhanced features

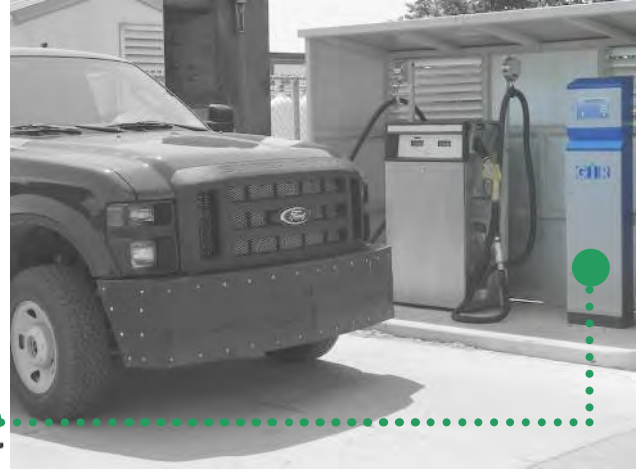
- Built-in setup and test mode for easy on-site troubleshooting
- Satellite terminals for a cost-effective multiple fuel islands setup
- Tank gauging interface (optional)
- Receipt ticket printer (optional)
- Gate access control (optional)





FUEL MANAGEMENT

# W150 software



## Benefits

**CLOUD NATIVE**

- Designed for **cloud** (SaaS) deployment; Also available on-premises (Windows)
- Accessible via any **web** browser, or free **app** for iPhone/iPad/Android
- Extremely **easy to use**
- Customizable reports
- **Visual** reports: bar graphs, pie charts
- 1-click **spreadsheet export**
- Built-in **API** for data integration with fleet and/or finance software app

## Features

- GIIR hardware units remote supervision
- List of authorized drivers and vehicles
- Real-time transactions log
- Vehicles odometer and engine hours
- Reporting by driver, vehicle, product, site, department, model, etc.
- Tank inventory management
- Up to 50 sites, 3000 vehicles, 3000 drivers
- Up to 16 products: Diesel, Unleaded, DEF...
- E-mail notifications

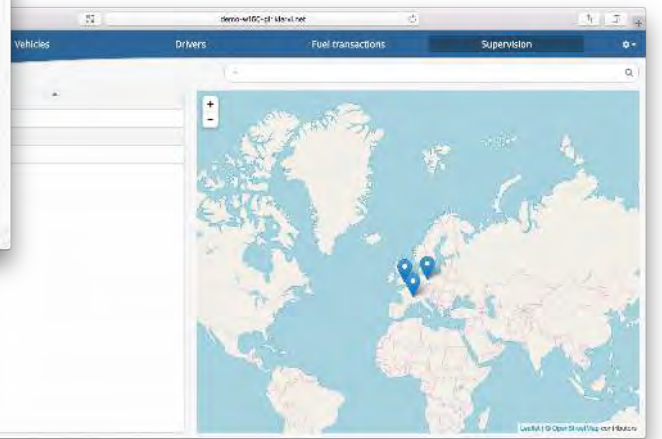
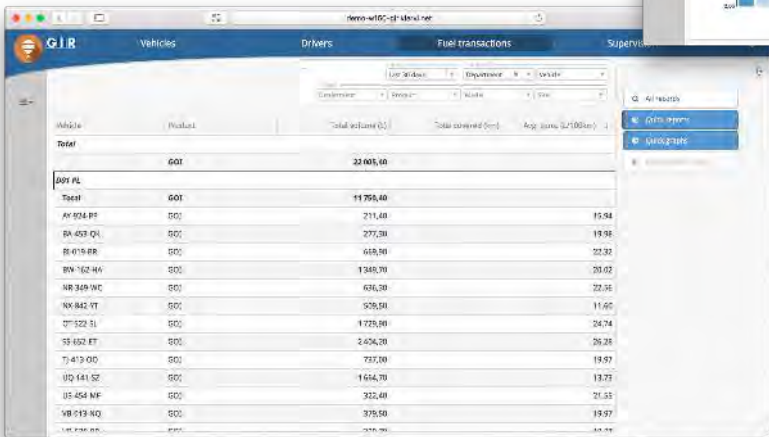
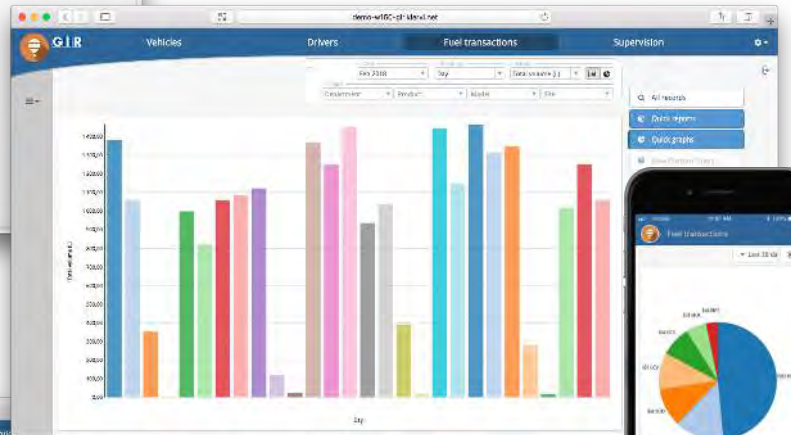
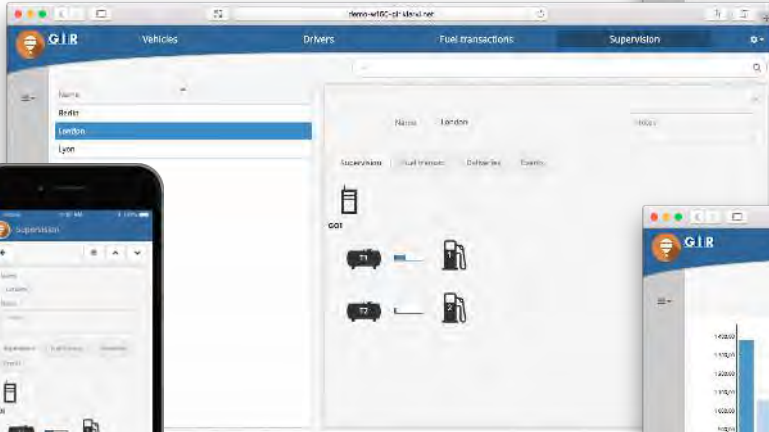
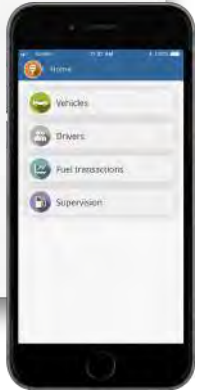
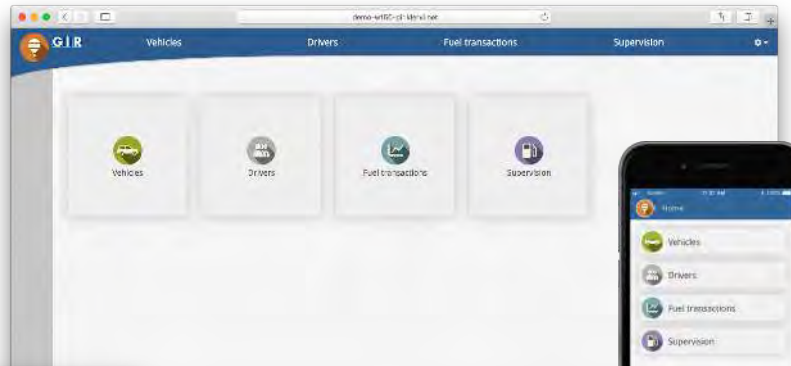
## Enhanced features

- Visual reports: bar graphs, pie charts
- Tank gauge reconciliation
- Additional prompts: job, activity code, etc.
- Telematics interface for automatic odometer collection
- Gate access control

[www.gir-na.com](http://www.gir-na.com)



# W150 software



## W250 software

	W150	W250
Maximum number of vehicles	3k	10k+
Maximum number of drivers	3k	10k+
Maximum number of sites	50	100+
Maximum number of pumps per site	16	16
Multiple software users	✓	✓
Read-only software users	✓	✓
Software users limited to some actions		✓
Software users limited to part of the vehicles / drivers dataset		✓
Organizational levels on top of vehicles and drivers	1	up to 3
Customized dashboard		✓
Custom properties (additional fields) for vehicles / drivers		✓
On-the-road refueling manual entry	✓	✓
On-the-road refueling data import		✓
Tank average price based on deliveries	✓	✓
Editable prices per department, with effective dates		✓
All vehicles / drivers authorized everywhere anytime	✓	✓
Per-vehicle and per-driver limited access to certain sites		✓
Per-vehicle and per-driver enforced weekly schedule		✓
Per-vehicle product authorization	✓	✓
Per-model vehicle tank capacity, mileage / engine hours configuration	✓	✓
Per-vehicle tank capacity, mileage / engine hours configuration		✓
Per-vehicle weekly, monthly, or one-time quota		✓
Preventive maintenance reminders		✓
Single identification mode for all vehicles	✓	✓
Single identification mode for all drivers	✓	✓
Multiple identification modes among vehicles		✓
Multiple identification modes among drivers		✓
Multiple timezones (per site, per software user)		✓

